

2019 Tesla MODEL 3 Long Range RWD *Ltd Avail*

VIN # 5YJ3E1EA5KF411789

50328 MILES	Sedan 4 Dr.	- Electric	Rear Wheel Drive Single-Speed Fixed Gear
----------------	-------------	---------------	---

INSPECTION LOCATION:
334 CANTON RD, CUMMING, GA 30040, USA

EXT: Deep Blue Metallic

INT: Black



BODY:



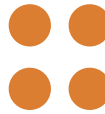
GLASS:



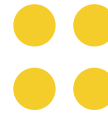
PART:



TIRES:



WHEELS:



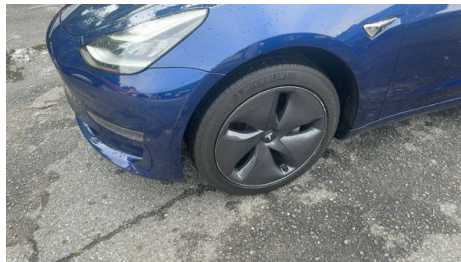
DISCLOSURES:



INSPECTION DATE:
MAY 24, 2024 @ 22:17

Vehicle Photos

ORIGINAL INSPECTION



Upload Photos

OPTIONAL

No photo

Interior (0)


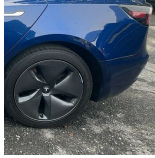
No damage

Exterior (8)

LEFT SIDE



Info ● ● ● ● Severe



COMPONENT	CROPPED PHOTO	DAMAGE TYPE	SEVERITY	REPAIR METHOD
1 Front Left Wheel		Has Medium Curb Rash	5 to 6 inches	Repair & Refinish
2 Rear Left Wheel		Has Medium Curb Rash	5 to 6 inches	Repair & Refinish
5 Front Left Tire		Is Medium Worn	Medium Signs of Wear	Replace
6 Rear Left Tire		Is Medium Worn	Medium Signs of Wear	Replace

RIGHT SIDE



Info ● ● ● ● Severe

COMPONENT	CROPPED PHOTO	DAMAGE TYPE	SEVERITY	REPAIR METHOD
-----------	---------------	-------------	----------	---------------

3	Front Right Wheel		Has Major Curb Rash	9 inches to 10 inches	Repair & Refinish
4	Rear Right Wheel		Has Major Curb Rash	9 inches to 10 inches	Repair & Refinish
7	Rear Right Tire		Is Medium Worn	Medium Signs of Wear	Replace
8	Front Right Tire		Is Medium Worn	Medium Signs of Wear	Replace

FRONT SIDE



Info ● ● ● ● Severe

COMPONENT	CROPPED PHOTO	DAMAGE TYPE	SEVERITY	REPAIR METHOD
-----------	---------------	-------------	----------	---------------

REAR SIDE



Info ● ● ● ● Severe

COMPONENT	CROPPED PHOTO	DAMAGE TYPE	SEVERITY	REPAIR METHOD
-----------	---------------	-------------	----------	---------------

WINDSHIELD

No damage

Tires & Wheels



- Like New
- Good Condition
- Medium Worn
- Major Worn
- Snow Tire

LEFT FRONT

Is Medium Worn

Medium Signs of Wear

5/32, 4/32

Plastic Cover

RIGHT FRONT

Is Medium Worn

Medium Signs of Wear

5/32, 4/32

Plastic Cover

LEFT REAR

Is Medium Worn

Medium Signs of Wear

5/32, 4/32

Plastic Cover

RIGHT REAR

Is Medium Worn

Medium Signs of Wear

5/32, 4/32

Plastic Cover

